



FANUC ROBOTICS M6i - M16iT -M16iLT

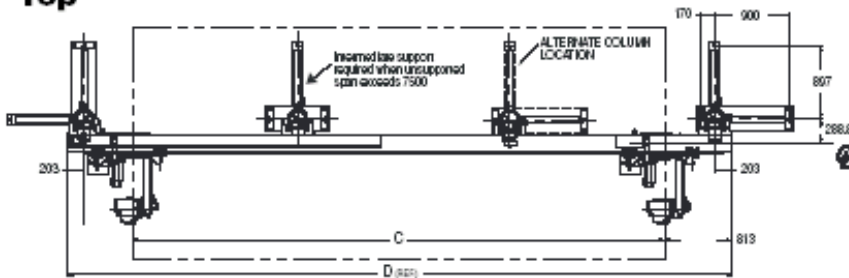


Specifications

Items	M-6iT	M-16iT	M-16iLT	
Axes	6	6	6	
Payload (kg)	6	16	10	
Reach (mm)	1159	1405	1616	
Repeatability (mm)	± 0.1	± 0.08	± 0.1	
Interference radius (mm)	Not applicable			
Motion range (degrees)	J1	2.4 - 21.5 m ^A	2.4 - 21.5 m ^A	2.4 - 21.5 m ^A
	J2	260	300	298
	J3	299	455.5	410
	J4	380	400	400
	J5	280	280	280
	J6	640	900	900
Motion speed (degrees/sec.)	J1	2 m/sec	2 m/sec	2 m/sec
	J2	120	140	140
	J3	120	140	140
	J4	360	330	330
	J5	360	330	330
	J6	450	450	450
Wrist moment (kgf-m)	J4	1.2	3.6	2.2
	J5	1.0	3.2	2.0
	J6	0.6	1.6	1.0
Wrist inertia (kgf-cm-s ²)	J4	6.4	8.7	5.3
	J5	2.0 4.5 ^B	7.1 10.2 ^B	4.3 10.2 ^B
	J6	0.62	2.0	1.2
Mechanical brakes	All axes			
Mechanical weight (kg)	820 ^C	864 ^C	902 ^C	
Mounting method	Column mount (as shown) or 30° machine/platen mount			
Installation environment				
Temperature °C	0 to 45			
Humidity	Normally: 75% or less Short term (within a month): 95% or less No condensation			
Vibration (m/s ²)	4.9 or less			
IP Rating(s)	Wrist & J3 arm IP67			
	J2 arm IP54 (IP55 optional)	J2 arm IP54 (IP65 optional)		
	Rail bellows packages available			
Payload (kg)	g ^B	16 ^B	16 ^B	
Rail Repeatability (mm)	± 0.25	± 0.25	± 0.25	

2Ri Robotics carries a wide selection of high-quality used robots, in stock and ready for shipment. Each component has undergone extensive reconditioning and passed rigorous testing to guarantee years of service and dependability.

Top



Front

