

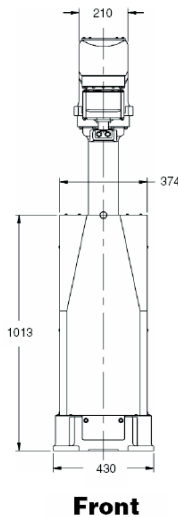
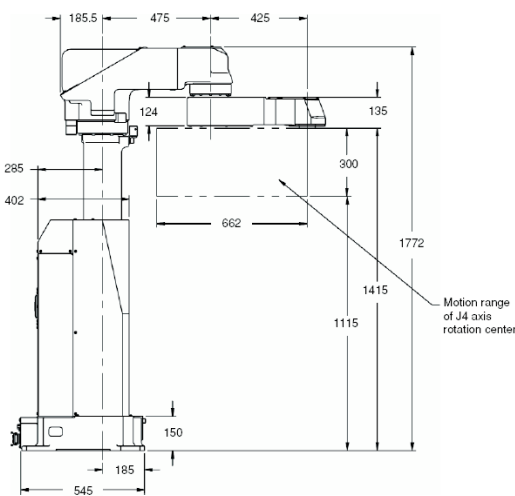


FANUC ROBOTICS A-520i

2Ri Robotics carries a wide selection of high-quality used robots, in stock and ready for shipment. Each component has undergone extensive reconditioning and passed rigorous testing to guarantee years of service and dependability

A-520i Specifications

Items		
Axes		4
Payload (kg)		20
Reach (mm)		900
Repeatability (mm)		± 0.05
Interference radius (mm)		238 (floor), 50 (ceiling)
Motion range (degrees)	J1	300 mm
	J2	300 (360 opt)
	J3	299
	J4	540
Motion speed (degrees/sec.)	J1	800 mm/sec
	J2	350
	J3	350
	J4	720
Wrist moment (kgf·m)	J4	2.4
Wrist inertia (kgf·cm·s ²)	J4	3.0
Mechanical brakes		Axes 1, 3
Mechanical weight (kg)		300
Mounting method		Floor, ceiling
Installation environment		
Temperature °C		0 to 45
Humidity		Normally: 75% or less Short term (within a month): 95% or less No condensation
Vibration (m/s ²)		4.9 or less
IP Rating(s)		No
Ceiling mount		Requires reconfiguring mechanical unit



Top

